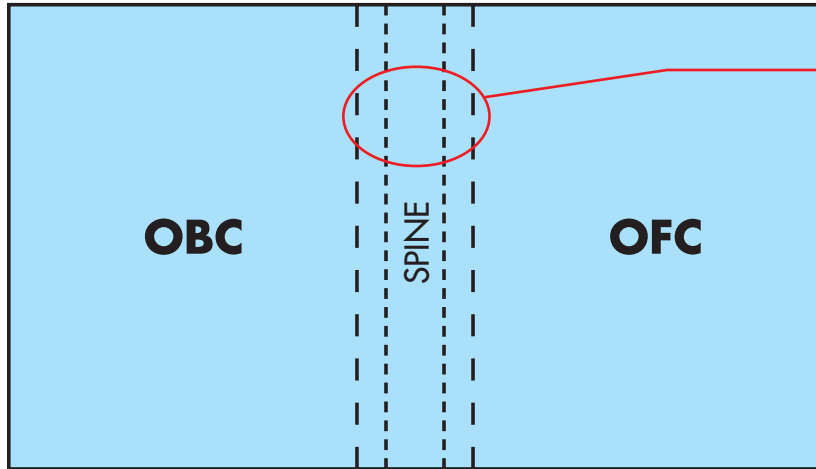
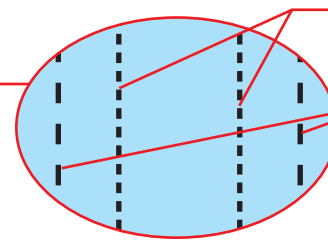


Hinge score on perfect bound books – cover

↓ Outside cover – built as a “printer’s spread”



Hinge scores
1/4" from spine

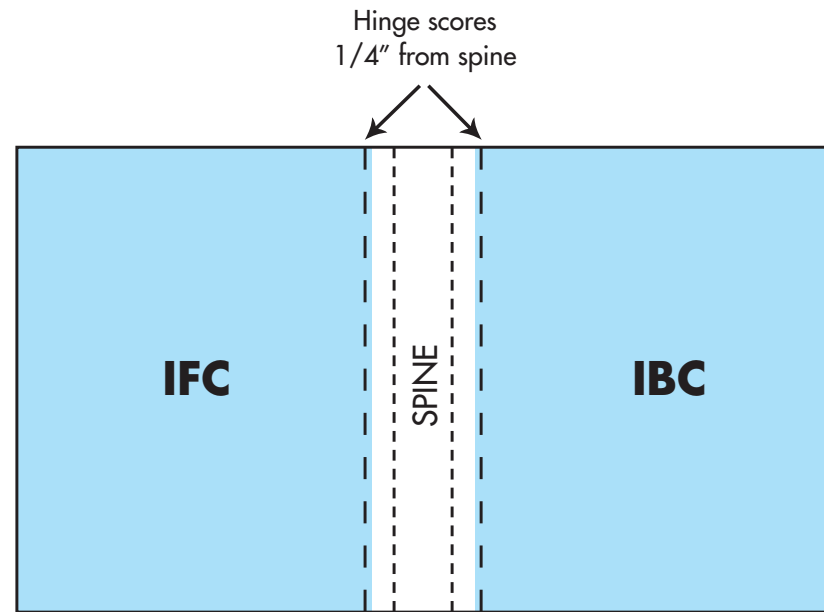


Add score marks at the spine

Add hinge score marks
1/4" away from the spine
on either side

Inside cover →

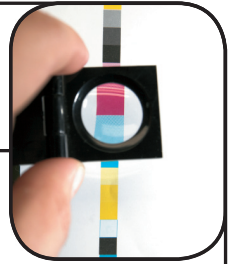
All inks & coatings must
be knocked out from the
inside spine, plus 3/16"
on either side.



Hinge scores
1/4" from spine

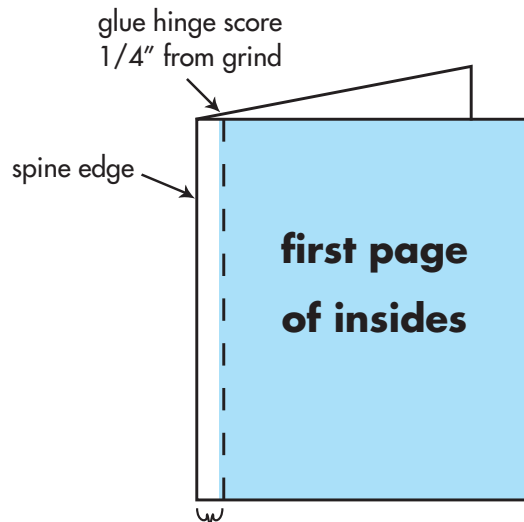
inks & coatings knocked
out 3/16" from spine

(continued on next page)

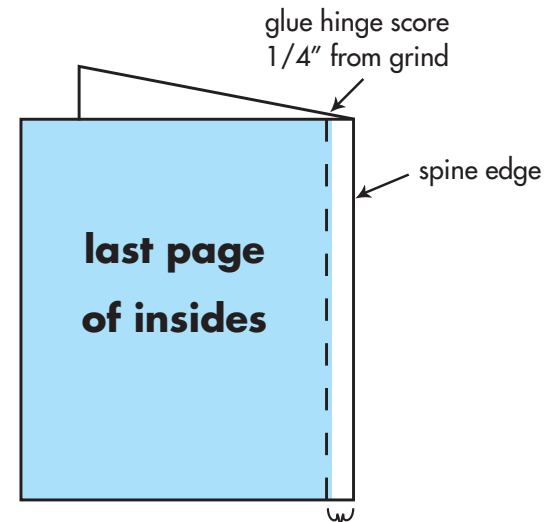


Hinge score on perfect bound books – first & last pages

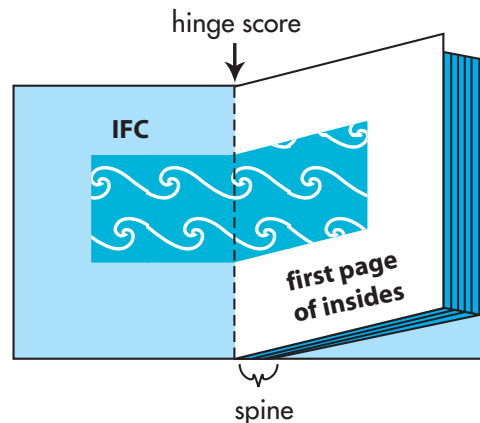
The first & last text pages of a perfect bound book must also have a “glue hinge” score applied, 1/4” from the spine edge. Inks & coatings must be knocked out 3/16” away from the spine edge.



inks & coatings knocked
out 3/16" from spine



inks & coatings knocked
out 3/16" from spine



Note that if you have an image that crosses over from the inside front cover to the first inside page, you must adjust your image position on each page to accommodate the 1/4" that is concealed by the glue hinge. The hinge score position on the first page will correspond to the hinge score position on the IFC.